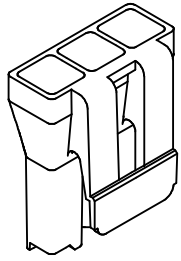
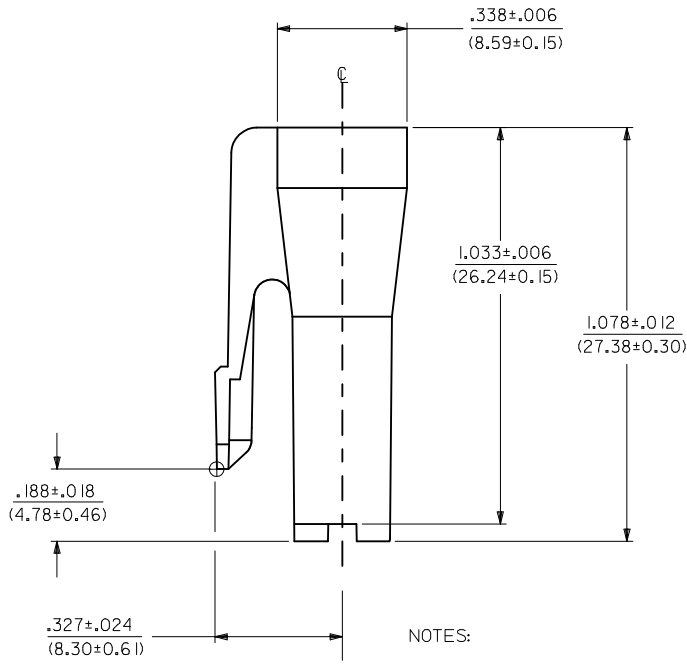
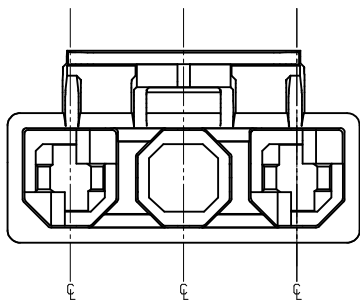
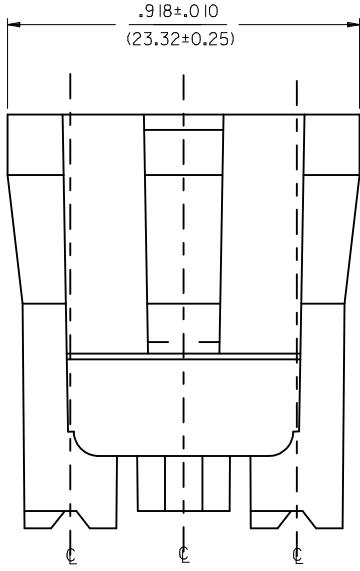
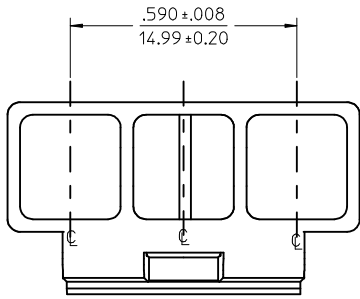


ITEM NUMBER	MATERIAL	COLOR
43335-1103	A	NATURAL
43335-2103	B	BLACK
X 43335-3103	A	RED
X 43335-4103	A	BLUE
43335-7103	D	BLACK

X = NOT RELEASED TO PRODUCTION



43335-1103  
(SCALE 2:1)

NOTES:

- 1) MATERIAL: A: NYLON, PA66, UL94V-2, COLOR: SEE CHART.  
B: UL94V-0, PA66, NYLON.  
D: NYLON, UL94V-2, COLOR: BLACK, IEC 60335-1 GLOW WIRE CAPABLE.
- 2) FINISH: NONE.
- 3) PRODUCT SPECIFICATION: PSX-43335-9999.
- 4) PACKAGING INFORMATION: PK-43335-001.
- 5) THIS CONNECTOR HOUSING FOR USE WITH 43375-\*\*\*\*.
- 6) THIS CONNECTOR HOUSING WILL MATE TO A-43160-\*\*\*3 AND 43384-\*\*\*3 HOUSINGS.
- 7) PARTS CONFORM TO CLASS 'B' REQUIREMENTS OF COSMETIC SPECIFICATION PS-45499-002 EXCEPT MATERIAL OPTION 'B' MEETS CLASS 'C' REQUIREMENTS FOR SINK AND DISCOLORATION.

<b>CORRECT TOLERANCE</b> EC NO: UCP2014-5424 DRWN:JDOX 2014/06/26 CHKD:ANDERSON 2014/06/26 APPR:FSMLTH 2014/07/09	QUALITY SYMBOLS ▽=0 ▽=0 ▽=0	GENERAL TOLERANCES (UNLESS SPECIFIED)		DIMENSION STYLE <b>IN/MM</b>		SCALE <b>4:1</b>	DESIGN UNITS <b>INCH</b>	THIRD ANGLE PROJECTION																					
		<table border="1"> <thead> <tr> <th></th> <th>mm</th> <th>INCH</th> </tr> </thead> <tbody> <tr> <td>4 PLACES ±</td> <td>---</td> <td>---</td> </tr> <tr> <td>3 PLACES ±</td> <td>---</td> <td>±.005</td> </tr> <tr> <td>2 PLACES ±</td> <td>0.13</td> <td>±.01</td> </tr> <tr> <td>1 PLACE ±</td> <td>0.25</td> <td>---</td> </tr> <tr> <td>0 PLACE ±</td> <td>±</td> <td>±</td> </tr> </tbody> </table>			mm	INCH	4 PLACES ±	---	---	3 PLACES ±	---	±.005	2 PLACES ±	0.13	±.01	1 PLACE ±	0.25	---	0 PLACE ±	±	±	DRAWN BY MAB 08/15/95		DATE 08/15/95		TITLE <b>3-CKT RECEPTACLE HOUSING          W/TPA .125X.020          FLAT BLADE CENTER VOID</b>			
			mm	INCH																									
		4 PLACES ±	---	---																									
3 PLACES ±	---	±.005																											
2 PLACES ±	0.13	±.01																											
1 PLACE ±	0.25	---																											
0 PLACE ±	±	±																											
CHECKED BY KBP 08/15/95		DATE 08/15/95																											
APPROVED BY RAS 08/15/95		DATE 08/15/95		MATERIAL NO. <b>SEE CHART</b>		DOCUMENT NO. <b>SD-43335-1103</b>		SHEET NO. <b>1 OF 1</b>																					
DRAFT WHERE APPLICABLE MUST REMAIN WITHIN DIMENSIONS		ANGULAR ±1/2°		SIZE <b>C</b>		THIS DRAWING CONTAINS INFORMATION THAT IS PROPRIETARY TO MOLEX INCORPORATED AND SHOULD NOT BE USED WITHOUT WRITTEN PERMISSION																							