

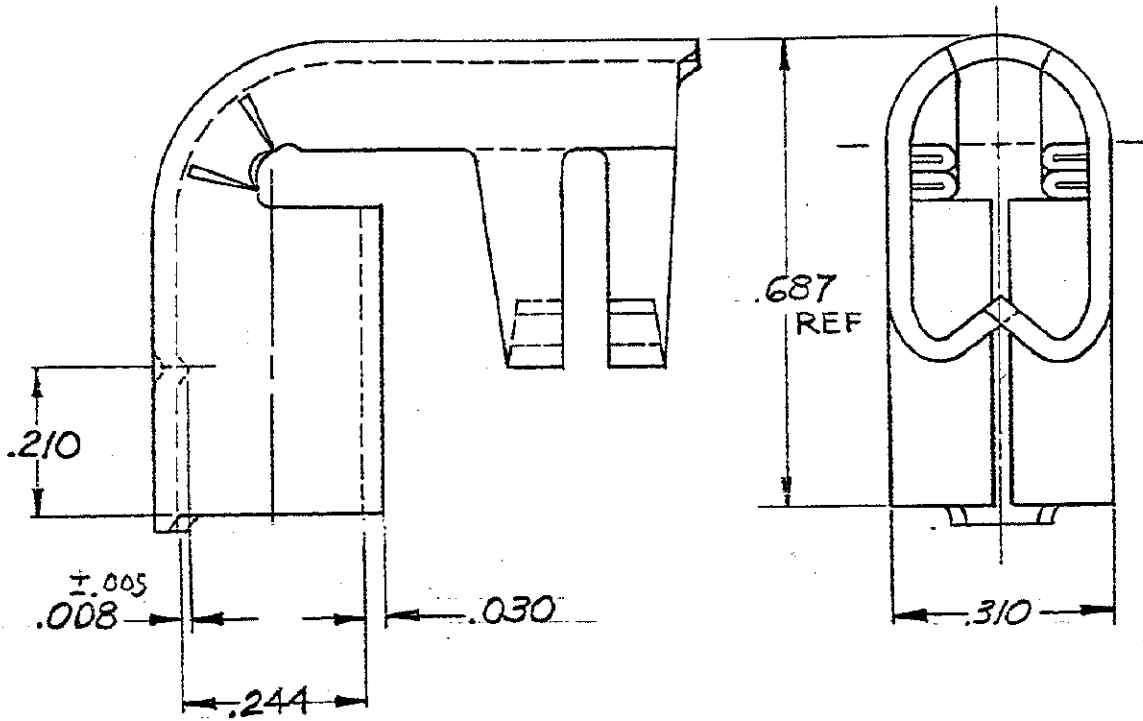
DRAWING MADE IN AMERICAN PROJECTION

©1947 BY AMP INCORPORATED. ALL RIGHTS RESERVED. AMP PRODUCTS COVERED BY PATENTS AND/OR PATENTS PENDING.

REVISIONS

LTR	DESCRIPTION	DATE	APPROVED
A	REDRAWN W/O CHANGE	2-15-73	SB
B	REV / G-5863	4/92	
C	REV / 0720-0091-93	6/93	ML

34483



100	LOOSE PC, BOX	8-34483-1
-	LOOSE PC	34483
QTY	PACKAGE TYPE	PART NO

UNLESS OTHERWISE SPECIFIED DIMENSIONS ARE IN INCHES
TOLERANCES ON:
DECIMALS ±.008
ANGLES ± 5°

CONTRACT NO.	4
DR	<i>Ensminger</i> 2-15-73
CHK	<i>Harry Paul</i> 2-15-73
APPD	<i>Abel</i> 2-16-73
REL	<i>Harry Paul</i> 2-16-73
DSGN APPD	
OTHER APPD	

AMP		AMP INCORPORATED HARRISBURG, PENNSYLVANIA	
NAME WIRE TERMINAL SPARK PLUG-RIGHT ANGLE			
SIZE	CODE IDENT NO.	NUMBER	
A	00779	34483	
SCALE 4:1		SHEET 1 OF 1	

MATERIAL
BRASS