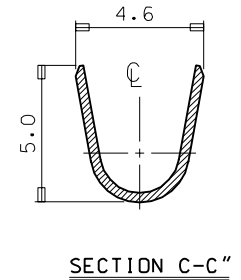
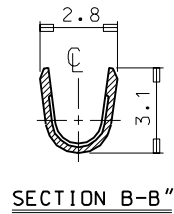
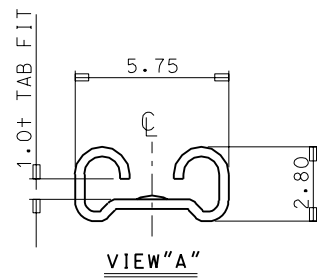
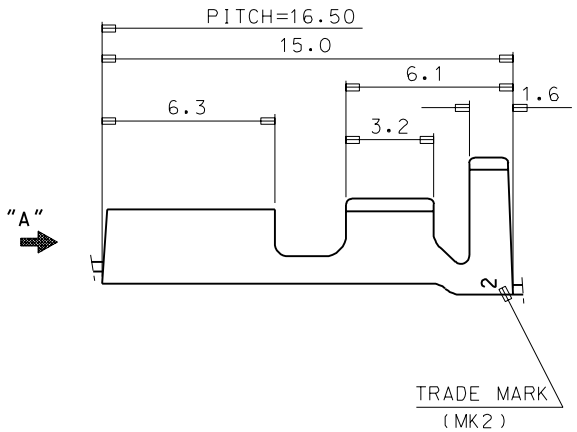
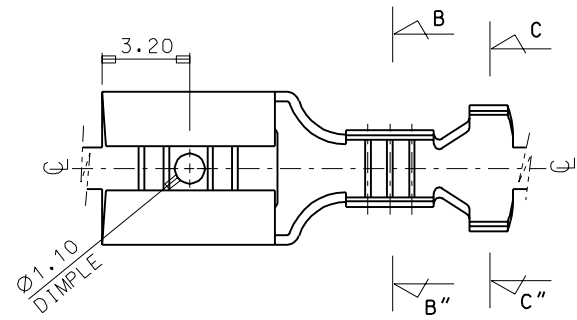


PROJECT NO. EDP NO. SD 35718-08\*0



- NOTES
1. MATERIAL: BRASS , 0.35THICKNESS
  2. FINISH: 35718-0800:UNPLATED  
35718-0810:POST-TIN PLATED

WIRE RANGE AWG #20-#16 (0.52-1.31mm <sup>2</sup> )				MATERIAL	SEE NOTES	MOLEX-KOREA CO.,LTD.
	INSULATION RANGE Ø2.6-3.5	B	REVISED	95-007	95.1.17	
DIE FEED: //	A	CAD REDRAWING	93-011	93.5.24	DIMENSION CLASSIFICATION ▼ : CRITICAL ▲ : MAJOR ( ) : REFERENCE	DRAWN BY W. Y. YANG APP'D BY SCALE 6:1
APPLICATOR FEED: 16.5	LTR	REVISION RECORD	ECN	DATE	ASS'Y PART	TITLE:
O'TY/ REEL OR PACK 7,000 O'ty/Reel	REVISE ONLY ON CAD SYSTEM				DESCRIPTION	ENG. NO.
					//	//
						SHEET .187 SLIP-ON REC' 1of1 REV B
						ENG. NO. SD 35718-08*0